



Katalog produktowy

Sliding shelving systems, pull-out shelving systems, and industrial furniture



Spis treści

Get to Know Us	03
Sliding Shelving System SRS	04
Pull-Out Shelving System SRW	14
Module Configurations SRS/SRW	24
Accessories SRS/SRW	28
Customization SRS/SRW	35
Industrial Furniture System SMP	37
Components SMP	47
Accessories SMP	55





Discover HexaStore

The strength of its design. The freedom to configure.

HexaStore offers storage systems designed for real-world applications—where accessibility, organization, and maximum space utilization matter most. We design solutions that organize workshops, production halls, and warehouses while flexibly adapting to the user's workflow. Regardless of the industry, the goal is always the same: more space, better organization, and more efficient work.

Our three product lines—Sliding Racking Systems, Pull-Out Racking Systems, and Industrial Furniture—form a cohesive ecosystem that can be configured precisely to the needs of a given space. The Pull-Out Shelving System solutions allow for maximum warehouse density, the Sliding Shelving System ensures fast and safe access to heavy items, and Industrial Furniture creates ergonomic workstations. Everything works together and can evolve as needs change.

We design every HexaStore component with heavy-duty use in mind. A robust construction, high load capacity, and durable materials ensure the system performs even in demanding industrial conditions. At the same time, we prioritize aesthetics and order, because a well-organized space offers not only convenience but also a professional workplace image.

We design and manufacture in Poland, maintaining full control over the entire process—from concept through testing to the finished product. This allows us to respond quickly to customer needs, develop the system, and deliver solutions tailored to specific applications.



Our mission is to create systems that truly support everyday work: they reduce the time it takes to access tools, help keep things organized, and allow you to make the most of the available space. We believe that good organization is the foundation of efficiency—which is why HexaStore is not just a product, but a well-thought-out concept for working with space.



SLIDING SHELVING SYSTEM

Maximize warehouse density with mobile racking on rails.
Save up to 80% of space.





Sliding Shelving System

Shelving on Sliding Rails

The SRS Sliding Shelving System is a solution that completely transforms the approach to workspace organization. By using sliding cabinets suspended on overhead tracks, it is possible to maximize storage density and reclaim up to several dozen percent of free space compared to traditional shelving. This is a practical solution to the problem of cramped workshops and overcrowded warehouses. The smooth operation of the shelving modules, thoughtful ergonomics, and sturdy construction ensure that the system not only organizes the space but also significantly improves efficiency.



Each shelving module can support a load of up to 250 kg, ensuring safety even with heavy equipment. Additionally, each module offers various interior configurations, allowing you to tailor the layout of shelves and workspace to the specific needs of the stored items.

The smooth operation of the shelving modules, thoughtful ergonomics, and robust construction ensure that the system not only organizes the space but also significantly improves operational efficiency.

Each shelving module can support a load of up to 250 kg, ensuring safety even with heavy equipment. Additionally, each module offers various interior configurations that allow you to adapt the layout of shelves and workspace to the specific needs of the stored items.

SRS - (height) - 2630 - (depth) (width)

Configuration 2xA, 1xB, 1xC



A



A



B



C

TYPE	HEIGHT	WIDTH	DEPTH	CONFIGURATION	INDEX
SRS	2170	2630	875	2xA, 1xB, 1xC	W-HS-0000161
SRS	2170	2630	1075	2xA, 1xB, 1xC	W-HS-0000162
SRS	2170	2630	1275	2xA, 1xB, 1xC	W-HS-0000163
SRS	2575	2630	875	2xA, 1xB, 1xC	W-HS-0000164
SRS	2575	2630	1075	2xA, 1xB, 1xC	W-HS-0000165
SRS	2575	2630	1275	2xA, 1xB, 1xC	W-HS-0000166



SRS - (height) - 3420 - (depth)

(width)

Configuration 2xA, 1xB, 1xC



A



B



A



C

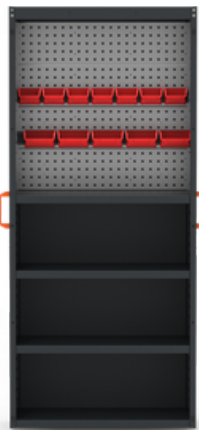
TYPE	HEIGHT	WIDTH	DEPTH	CONFIGURATION	INDEX
SRS	2170	3420	875	2xA, 1xB, 1xC	W-HS-0000167
SRS	2170	3420	1075	2xA, 1xB, 1xC	W-HS-0000168
SRS	2170	3420	1275	2xA, 1xB, 1xC	W-HS-0000169
SRS	2575	3420	875	2xA, 1xB, 1xC	W-HS-0000170
SRS	2575	3420	1075	2xA, 1xB, 1xC	W-HS-0000171
SRS	2575	3420	1275	2xA, 1xB, 1xC	W-HS-0000172

SRS - (height) - 2630 - (depth) (width)

Configuration 2xA, 2xB



A



B



A



B

TYPE	HEIGHT	WIDTH	DEPTH	CONFIGURATION	INDEX
SRS	2170	2630	875	2xA, 2xB	W-HS-0000173
SRS	2170	2630	1075	2xA, 2xB	W-HS-0000174
SRS	2170	2630	1275	2xA, 2xB	W-HS-0000175
SRS	2575	2630	875	2xA, 2xB	W-HS-0000176
SRS	2575	2630	1075	2xA, 2xB	W-HS-0000177
SRS	2575	2630	1275	2xA, 2xB	W-HS-0000178



SRS - (height) - 2630 - (depth) (width)

Configuration 4xA



A



A



A

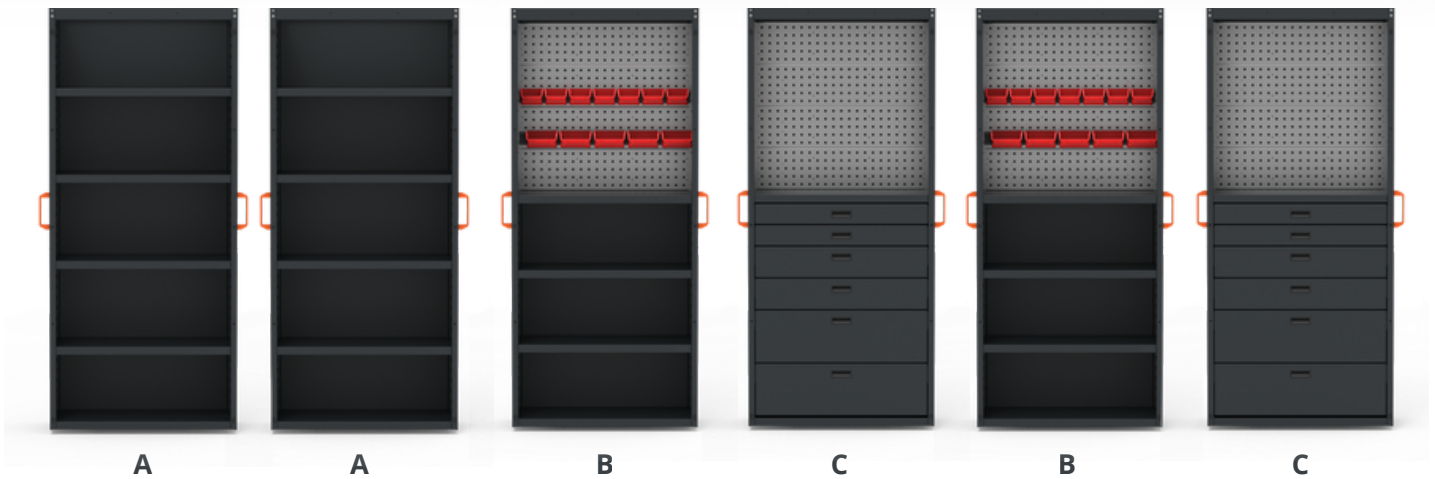


A

TYPE	HEIGHT	WIDTH	DEPTH	CONFIGURATION	INDEX
SRS	2170	2630	875	4xA	W-HS-0000179
SRS	2170	2630	1075	4xA	W-HS-0000180
SRS	2170	2630	1275	4xA	W-HS-0000181
SRS	2575	2630	875	4xA	W-HS-0000182
SRS	2575	2630	1075	4xA	W-HS-0000183
SRS	2575	2630	1275	4xA	W-HS-0000184

SRS - (height) - 3420 - (depth) (width)

Configuration 2xA, 2xB, 2xC



TYPE	HEIGHT	WIDTH	DEPTH	CONFIGURATION	INDEX
SRS	2170	3420	875	2XA, 2XB, 2XC	W-HS-0000185
SRS	2170	3420	1075	2XA, 2XB, 2XC	W-HS-0000186
SRS	2170	3420	1275	2XA, 2XB, 2XC	W-HS-0000187
SRS	2575	3420	875	2XA, 2XB, 2XC	W-HS-0000188
SRS	2575	3420	1075	2XA, 2XB, 2XC	W-HS-0000189
SRS	2575	3420	1275	2XA, 2XB, 2XC	W-HS-0000190



SRS - (height) - 3420 - (depth) (width)

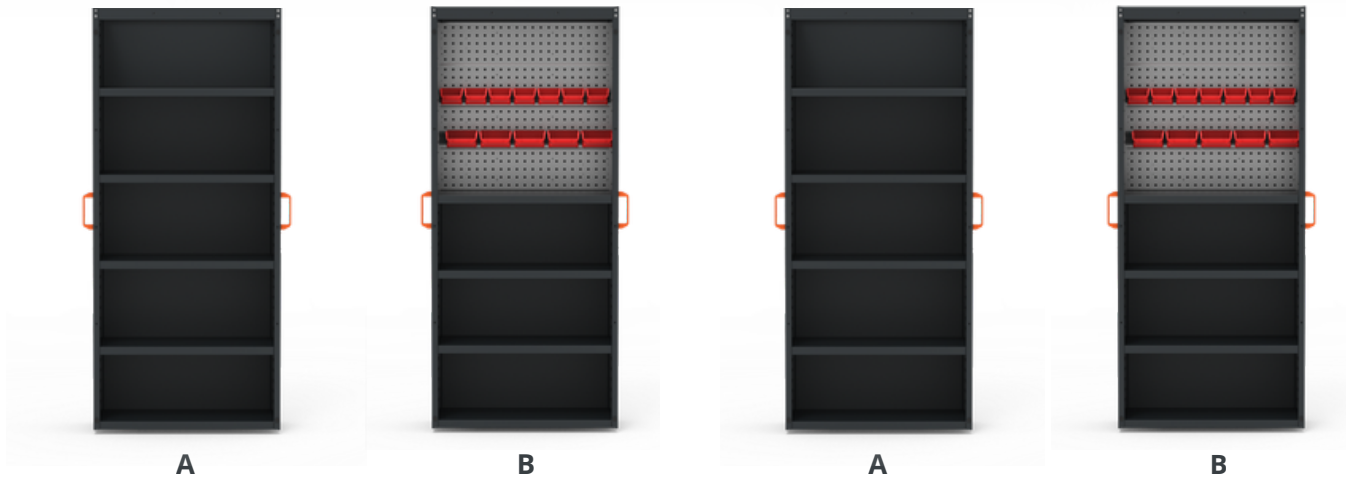
Configuration 6xA



TYPE	HEIGHT	WIDTH	DEPTH	CONFIGURATION	INDEX
SRS	2170	3420	875	6xA	W-HS-0000191
SRS	2170	3420	1075	6xA	W-HS-0000192
SRS	2170	3420	1275	6xA	W-HS-0000193
SRS	2575	3420	875	6xA	W-HS-0000194
SRS	2575	3420	1075	6xA	W-HS-0000195
SRS	2575	3420	1275	6xA	W-HS-0000196

SRS - (height) - 3420 - (depth) (width)

Configuration 2xA, 2xB



TYPE	HEIGHT	WIDTH	DEPTH	CONFIGURATION	INDEX
SRS	2170	3420	875	2xA, 2xB	W-HS-0000243
SRS	2170	3420	1075	2xA, 2xB	W-HS-0000244
SRS	2170	3420	1275	2xA, 2xB	W-HS-0000245
SRS	2575	3420	875	2xA, 2xB	W-HS-0000246
SRS	2575	3420	1075	2xA, 2xB	W-HS-0000247
SRS	2575	3420	1275	2xA, 2xB	W-HS-0000248



SRS - (height) - 3420 - (depth) (width)

Configuration 4xA



A



A



A



A

TYPE	HEIGHT	WIDTH	DEPTH	CONFIGURATION	INDEX
SRS	2170	3420	875	4xA	W-HS-0000249
SRS	2170	3420	1075	4xA	W-HS-0000250
SRS	2170	3420	1275	4xA	W-HS-0000251
SRS	2575	3420	875	4xA	W-HS-0000252
SRS	2575	3420	1075	4xA	W-HS-0000253
SRS	2575	3420	1275	4xA	W-HS-0000254



SYSTEM OF PULL-OUT SHELVING

Sturdy construction, maximum ease of use, and organization wherever durability matters.





Pull-Out Shelving System

Mobile shelving on slides

The Pull-Out Shelving System is a functional solution designed to streamline workspace organization. The independently pull-out modules provide quick and convenient access to stored materials without having to move the entire unit. This solution improves workplace ergonomics, saves time, and allows for better use of available space.

The ends of the upper beams serve as shelves

LED lighting for the interior of the bookcase



LED lighting for the interior of the bookcase

Adjustable leveling feet for the bookcase

Any interior configuration of the modules is possible

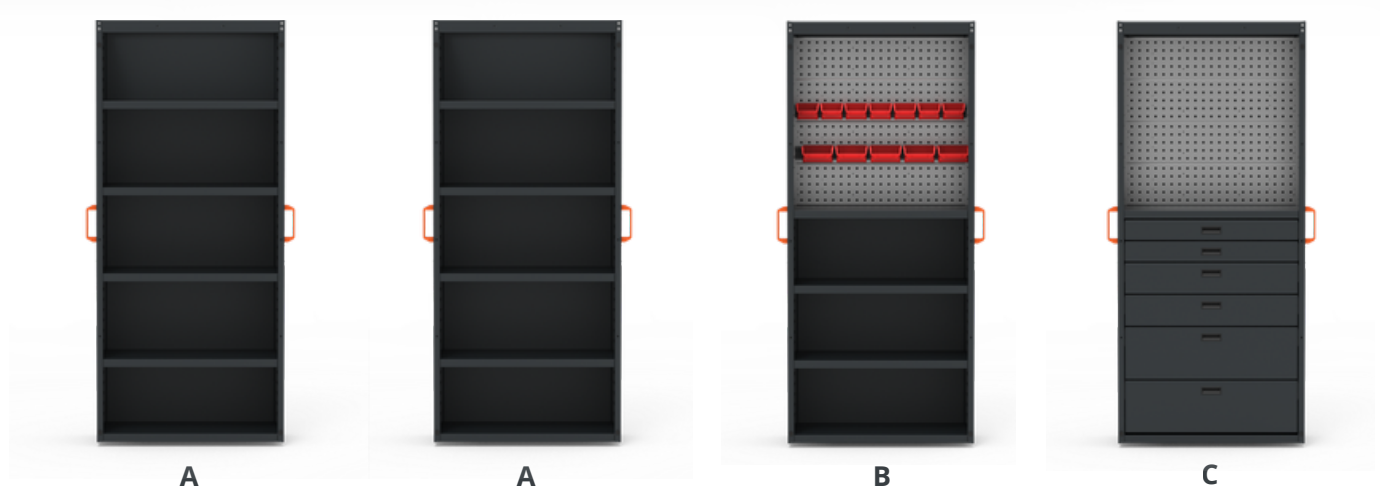
Custom wrapping and painting of the bookcase is available

Smooth-gliding drawers, an ergonomic design, and sturdy construction ensure that the system not only organizes the space but also significantly enhances comfort and work efficiency.

Each module supports a load of up to 200 kg, ensuring safety even with heavy equipment. The available interior configurations allow you to customize the layout of shelves, drawers, and perforated panels to suit the type of materials being stored and the user's individual needs.

SRW - (height) - 1810 - (depth) (width)

Configuration 2xA, 1xB, 1xC



TYPE	HEIGHT	WIDTH	CONFIGURATION	INDEX
SRW	2170	1810	2xA, 1xB, 1xC	W-HS-0000286
SRW	2575	1810	2xA, 1xB, 1xC	W-HS-0000287



SRW - (height) - 1810 - (depth) (width)

Configuration 2xA, 2xB



A



B



A



B

TYPE	HEIGHT	WIDTH	CONFIGURATION	INDEX
SRW	2170	1810	2xA, 2xB	W-HS-0000288
SRW	2575	1810	2xA, 2xB	W-HS-0000289

SRW - (height) - 1810 - (depth) (width)

Configuration 4xA



TYPE	HEIGHT	WIDTH	CONFIGURATION	INDEX
SRW	2170	1810	4xA	W-HS-0000290
SRW	2575	1810	4xA	W-HS-0000291



SRW - (height) - 2630 - (depth) (width)

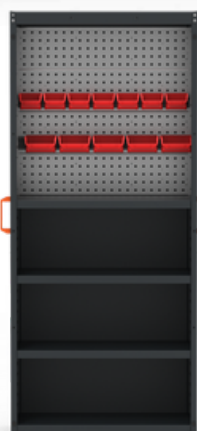
Configuration 2xA, 1xB, 1xC



A



A



B

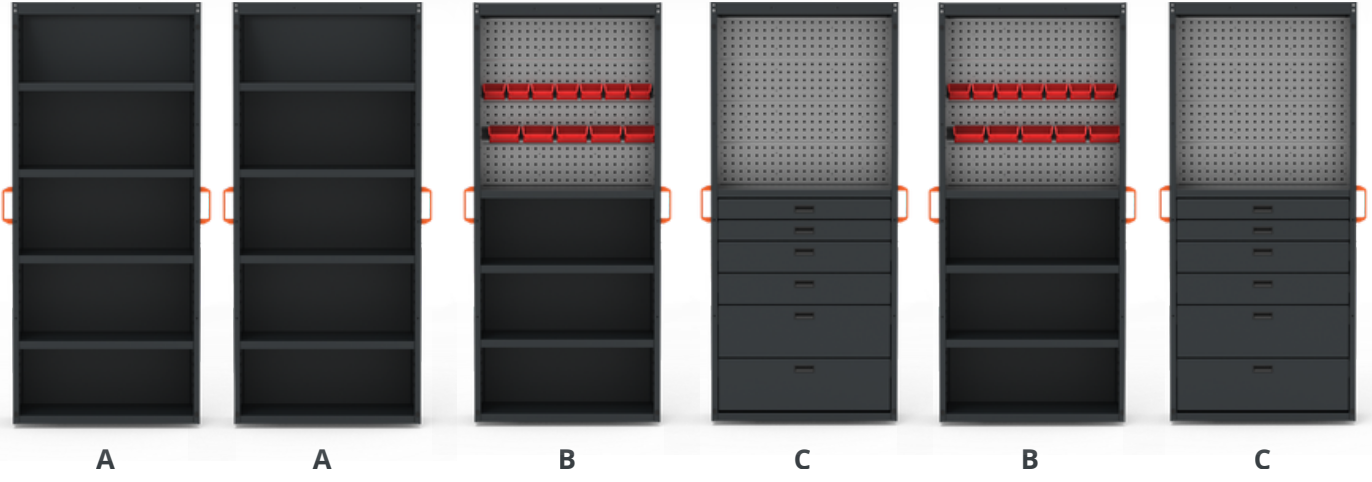


C

TYPE	HEIGHT	WIDTH	CONFIGURATION	INDEX
SRW	2170	2630	2xA, 1xB, 1xC	W-HS-0000292
SRW	2575	2630	2xA, 1xB, 1xC	W-HS-0000293

SRW - (height) - 2630 - (depth) (width)

Configuration 2xA, 2xB, 2xC

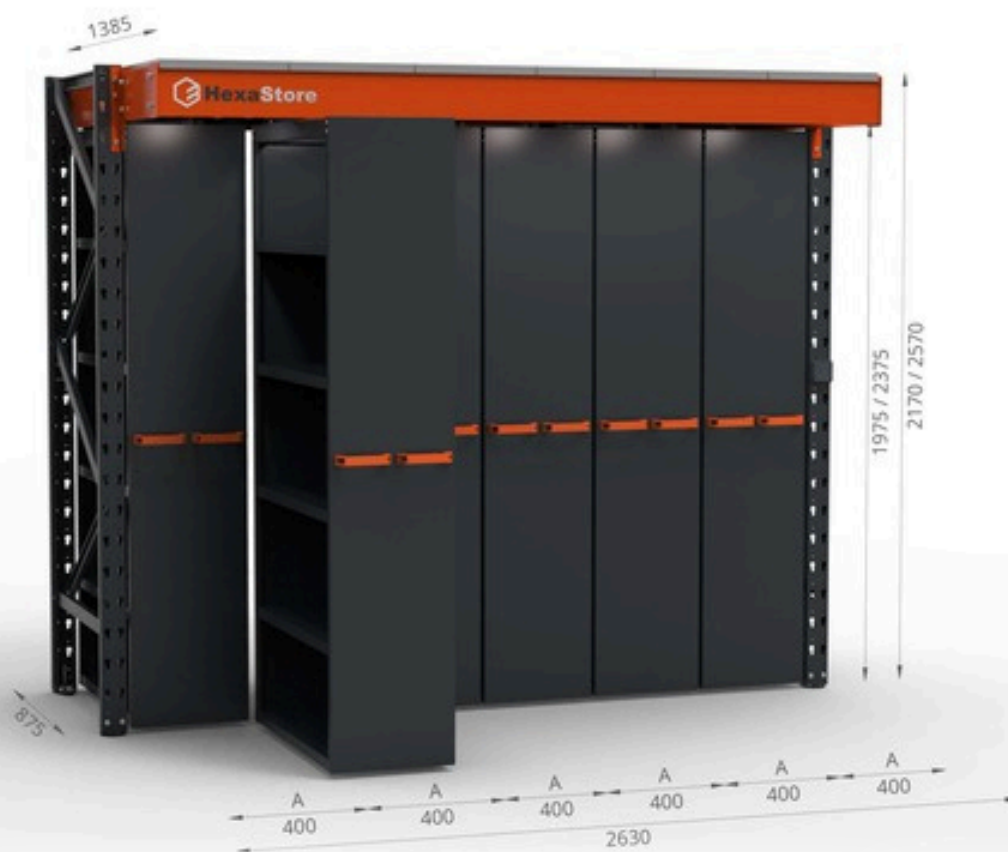


TYPE	HEIGHT	WIDTH	CONFIGURATION	INDEX
SRW	2170	2630	2xA, 2xB, 2xC	W-HS-0000294
SRW	2575	2630	2xA, 2xB, 2xC	W-HS-0000295



SRW - (height) - 2630 - (depth) (width)

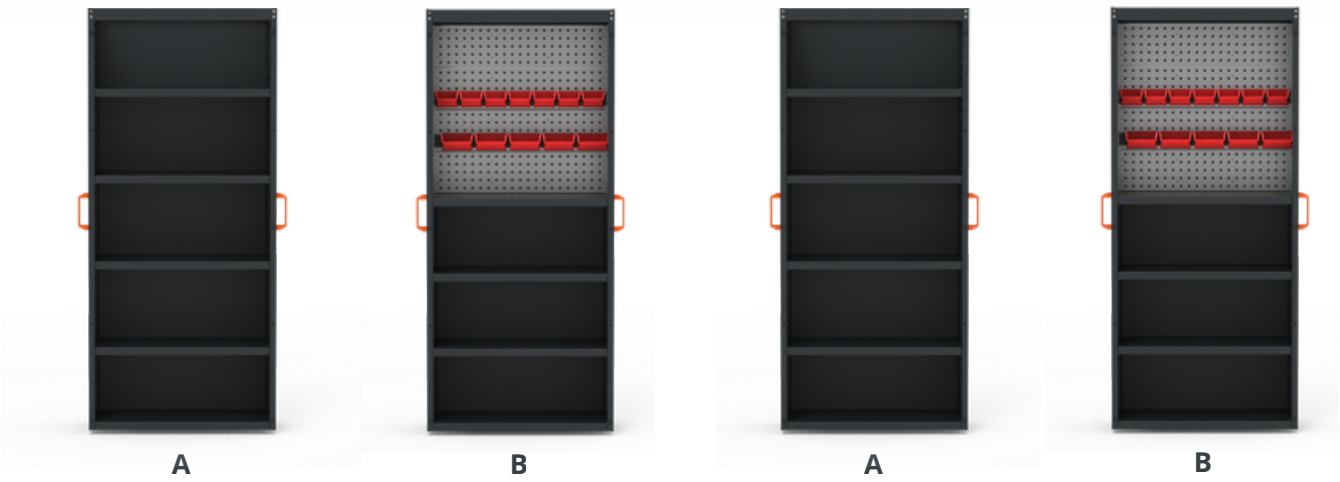
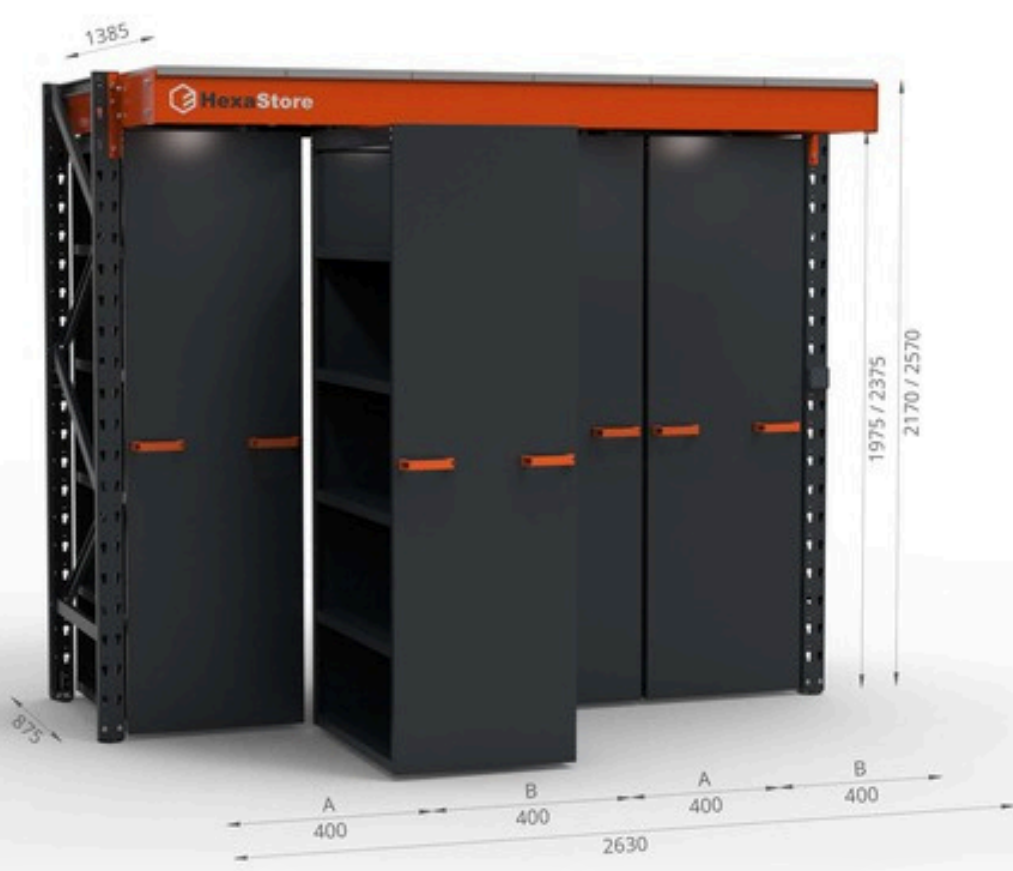
Configuration 6xA



TYPE	HEIGHT	WIDTH	CONFIGURATION	INDEX
SRW	2170	2630	6xA	W-HS-0000296
SRW	2575	2630	6xA	W-HS-0000297

SRW - (height) - 2630 - (depth) (width)

Configuration 2xA, 2xB



TYPE	HEIGHT	WIDTH	CONFIGURATION	INDEX
SRW	2170	2630	2xA, 2xB	W-HS-0000298
SRW	2575	2630	2xA, 2xB	W-HS-0000299



SRW - (height) - 2630 - (depth) (width)

Configuration 4xA



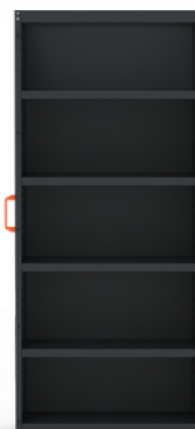
A



A

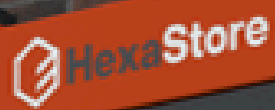


A



A

TYPE	HEIGHT	WIDTH	CONFIGURATION	INDEX
SRW	2170	2630	4xA	W-HS-0000300
SRW	2575	2630	4xA	W-HS-0000301

The HexaStore logo is displayed on a bright orange shelf against a dark brick wall background.

CONFIGURATIONS OF SRS AND SRW MODULES

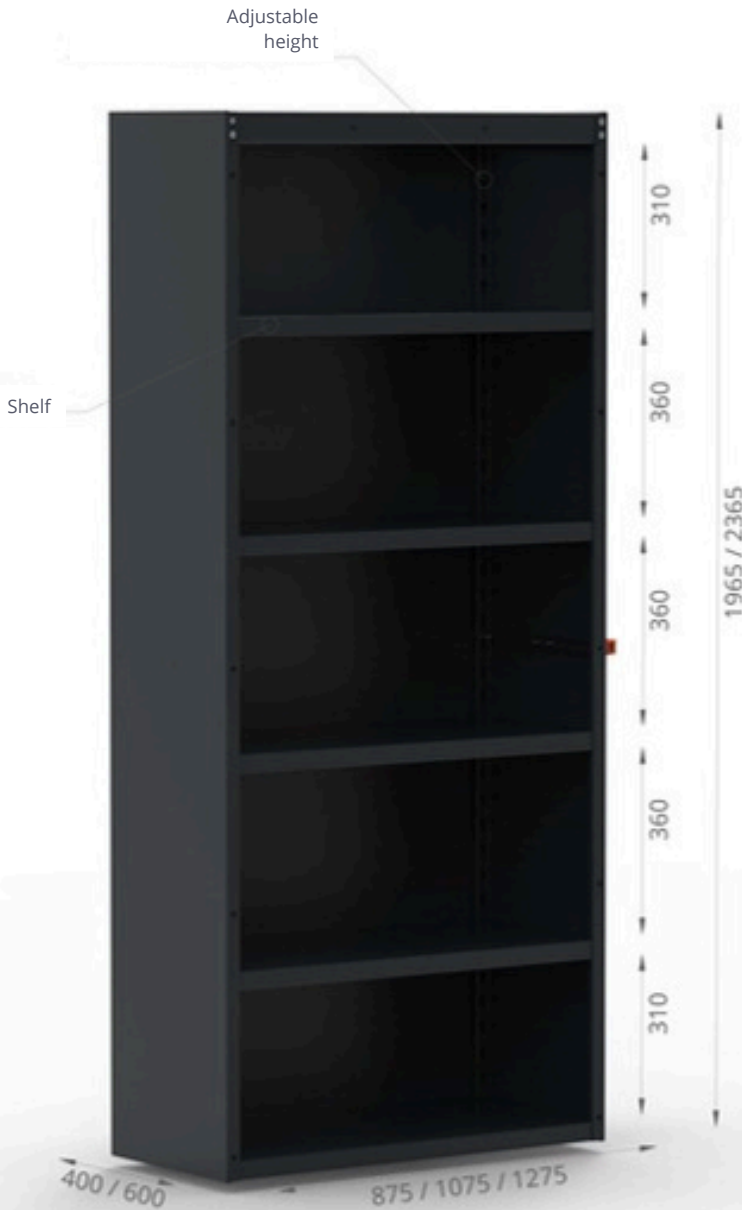
Each module can be freely configured to suit your specific work needs by adjusting the layout of shelves, dividers, and accessories.





SRS/SRW Configuration A

Standard module configurations



4 shelves for a height of 1965 mm
5 shelves for a height of 2363 mm



Clearance between shelves:
805 mm, 1005 mm, and 1205 mm



The shelves can be adjusted
in 75-mm increments



Shelf load capacity: 100 kg, Total
load capacity of the SRS module:
250 kg; Total load capacity of the
SRW module: 200 kg



Durable powder
coating



Sturdy
construction



Flexibility
in configuration













Ability to
reconfigure

SRS/SRW Configuration B

Standard module configurations



-  4 panels for a height of 1965 mm;
6 panels for a height of 2365 mm
-  Perforations in the panels
10 x 10 mm with a spacing
of 38 x 38 mm
-  4 shelves that can be
adjusted in 75-mm increments
-  Clearance between shelves:
805 mm, 1005 mm, and 1205 mm
-  Drawer load capacity: 75 kg, Total
load capacity of the SRS module:
250 kg, Total load capacity of the
SRW module: 200 kg
-  Durable
powder coating
-  Two sizes
of litter boxes
-  Sturdy
construction
-  Flexibility
in configuration
-  Ability to
reconfigure



SRS/SRW Configuration C

Standard module configurations



4 panels for a height of 1965 mm;
6 panels for a height of 2365 mm



Perforations in the panels
10 x 10 mm with a spacing of
38 x 38 mm



6 drawers, 100 mm high
150 mm, 250 mm



Drawer load capacity: 75 kg, Total
load capacity of the SRS module: 250
kg; Total load capacity of the SRW
module: 200 kg



100% drawer extension



Set of dividers
for drawers with a depth of
100–150 mm



Durable powder
coating



Protective mat
in drawers



Sturdy
construction



Flexibility
in configuration



Ability to
reconfigure



HexaStore



HexaStore

ACCESSORIES FOR SRS AND SRW

Accessories make organization much easier, improve safety, and allow you to tailor the interior precisely to the specific needs of your work.





Interior shelf SRS/SRW



Shelf capacity: 100 kg



The shelves can be adjusted in 75-mm increments



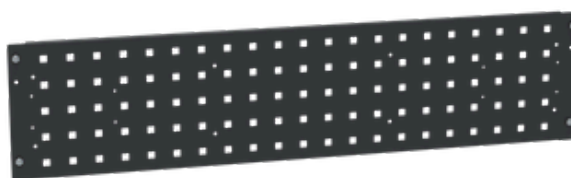
WIDTH	DEPTH	INDEX
875	400	W-HS-0000033
1075	400	W-HS-0000034
1275	400	W-HS-0000035
875	600	W-HS-0000036
1075	600	W-HS-0000037
1275	600	W-HS-0000038

Perforated panel SRS/SRW

WIDTH	DEPTH	INDEX
875	200	W-HS-0000041
1075	200	W-HS-0000042
1275	200	W-HS-0000043



10 x 10 mm perforations spaced 38 x 38 mm apart



Tray handle SRS/SRW



Flexibility in configuration



WIDTH	TRAY 110x165x75	TRAY 155x240x125	INDEX
875	2 pcs.	3 pcs.	W-HS-0000047
1075	3 pcs.	4 pcs.	W-HS-0000048
1275	3 pcs.	5 pcs.	W-HS-0000049

Drawers SRS/SRW

EXTERNAL HEIGHT	INTERNAL HEIGHT	WIDTH	DEPTH	INDEX
100	69	875	400	W-HS-0000050
150	119	875	400	W-HS-0000051
200	169	875	400	W-HS-0000052
250	219	875	400	W-HS-0000104
100	69	875	600	W-HS-0000053
150	119	875	600	W-HS-0000054
200	169	875	600	W-HS-0000055
250	219	875	600	W-HS-0000105
100	69	1075	400	W-HS-0000056
150	119	1075	400	W-HS-0000057
200	169	1075	400	W-HS-0000058
250	219	1075	400	W-HS-0000106
100	69	1075	600	W-HS-0000059
150	119	1075	600	W-HS-0000060
200	169	1075	600	W-HS-0000061
250	219	1075	600	W-HS-0000107
100	69	1275	400	W-HS-0000062
150	119	1275	400	W-HS-0000063
200	169	1275	400	W-HS-0000064
250	219	1275	400	W-HS-0000108
100	69	1275	600	W-HS-0000065
150	119	1275	600	W-HS-0000066
200	169	1275	600	W-HS-0000067
250	219	1275	600	W-HS-0000109



Heights: 100 mm
150 mm, 250 mm



Load capacity: 75 kg



100% extension



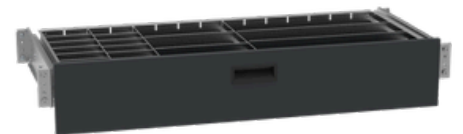
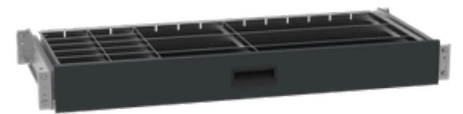
Set of dividers for
drawers with a depth of
100-150 mm



Durable powder
coating

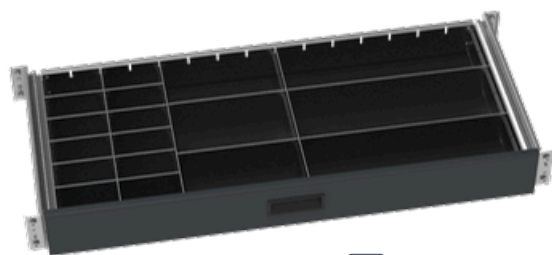


Protective
mat in drawers

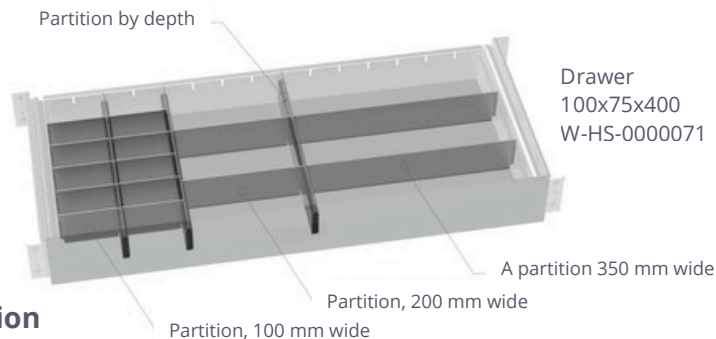




Drawer divider sets SRS/SRW

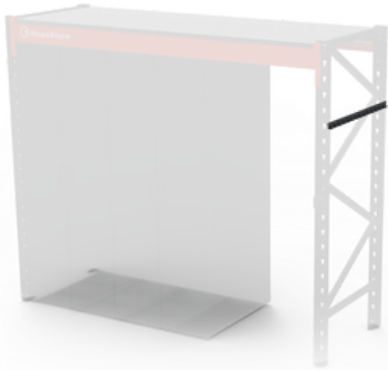


**Flexibility
in configuration**



DRAWER DIMENSIONS	PARTITION BY DEPTH	PARTITIONS 100 WIDE	PARTITIONS 200 WIDE	PARTITIONS 350 WIDE	INDEX
100x875x400	3 pcs.	10 pcs.	2 pcs.	2 pcs.	W-HS-0000071
100x875x600	3 pcs.	14 pcs.	3 pcs.	3 pcs.	W-HS-0000072
100x1075x400	5 pcs.	20 pcs.	2 pcs.	2 pcs.	W-HS-0000073
100x1075x600	5 pcs.	28 pcs.	3 pcs.	3 pcs.	W-HS-0000074
100x1275x400	6 pcs.	20 pcs.	4 pcs.	2 pcs.	W-HS-0000075
100x1275x600	6 pcs.	28 pcs.	6 pcs.	3 pcs.	W-HS-0000076
150x875x400	3 pcs.	10 pcs.	2 pcs.	2 pcs.	W-HS-0000110
150x875x600	3 pcs.	14 pcs.	3 pcs.	3 pcs.	W-HS-0000111
150x1075x400	5 pcs.	20 pcs.	2 pcs.	2 pcs.	W-HS-0000112
150x1075x600	5 pcs.	28 pcs.	3 pcs.	3 pcs.	W-HS-0000113
150x1275x400	6 pcs.	20 pcs.	4 pcs.	2 pcs.	W-HS-0000114
150x1275x600	6 pcs.	28 pcs.	6 pcs.	3 pcs.	W-HS-0000115
200x875x400	3 pcs.	10 pcs.	2 pcs.	2 pcs.	W-HS-0000077
200x875x600	3 pcs.	14 pcs.	3 pcs.	3 pcs.	W-HS-0000078
200x1075x400	5 pcs.	20 pcs.	2 pcs.	2 pcs.	W-HS-0000079
200x1075x600	5 pcs.	28 pcs.	3 pcs.	3 pcs.	W-HS-0000080
200x1275x400	6 pcs.	20 pcs.	4 pcs.	2 pcs.	W-HS-0000081
200x1275x600	6 pcs.	28 pcs.	6 pcs.	3 pcs.	W-HS-0000082

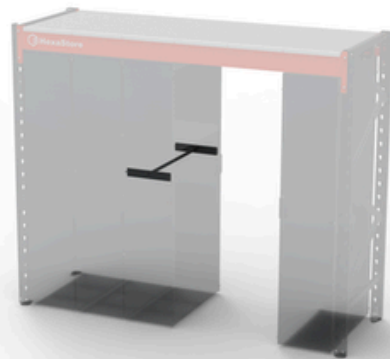
Outdoor coat rack SRS/SRW



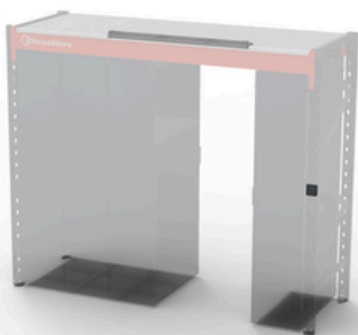
WIDTH	INDEX
875	W-HS-0000083
1075	W-HS-0000084
1275	W-HS-0000085

Indoor coat rack SRS/SRW

WIDTH	DEPTH	INDEX
875	400	W-HS-0000200
1075	400	W-HS-0000201
1275	400	W-HS-0000202
875	600	W-HS-0000086
1075	600	W-HS-0000087
1275	600	W-HS-0000088



Shelf lighting SRS

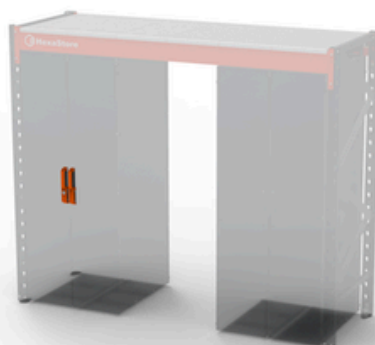


WIDTH	LED PANELS	INDEX
2630	1 pcs.	W-HS-0000089
3420	2 pcs.	W-HS-0000090

Cabinet lock SRS

INDEX

W-HS-0000093





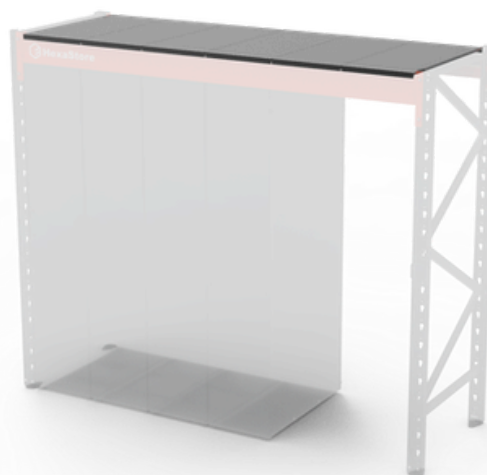
Side panels for shelving units SRS/SRW



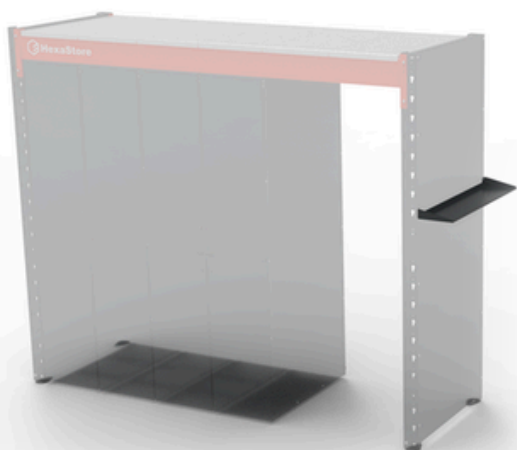
HEIGHT	DEPTH	INDEX
1965	875	W-HS-0000094
1965	1075	W-HS-0000095
1965	1275	W-HS-0000096
2365	875	W-HS-0000097
2365	1075	W-HS-0000098
2365	1275	W-HS-0000099

Covers for the top frame profiles SRS

HEIGHT	DEPTH	INDEX
875	2630	W-HS-0000116
875	3420	W-HS-0000117
1075	2630	W-HS-0000118
1075	3420	W-HS-0000119
1275	2630	W-HS-0000120
1275	3420	W-HS-0000121



Shelves on the side of the frame SRS/SRW



WIDTH	INDEX
875	W-HS-0000240
1075	W-HS-0000241
1275	W-HS-0000242

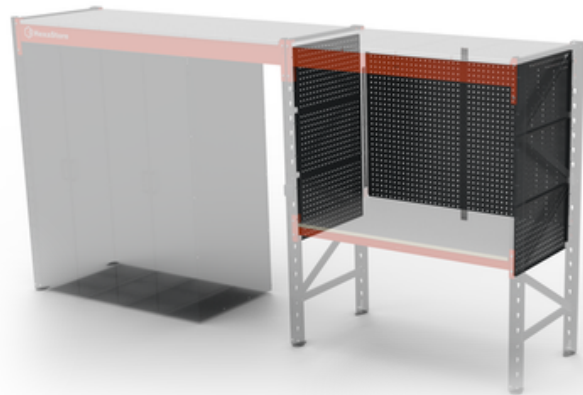
Side table with a tabletop SRS/SRW



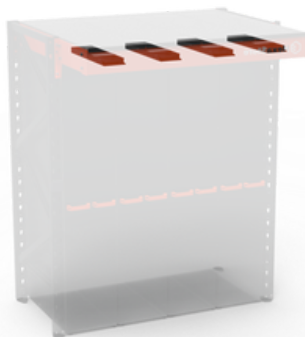
WIDTH	INDEX
875	W-HS-0000255
1075	W-HS-0000256
1275	W-HS-0000257

Perforated panels for extensions SRS/SRW

NAME	DEPTH	INDEX
Rear panels	x	W-HS-0000258
Side panels	875	W-HS-0000259
Side panels	1075	W-HS-0000260
Side panels	1275	W-HS-0000261



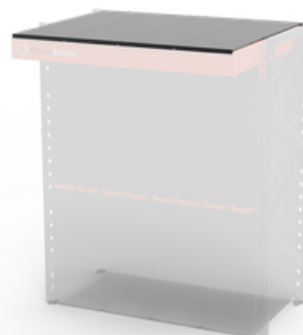
Shelf lighting SRW



WIDTH	PANEL LED	INDEX
4x400	4 pcs.	W-HS-0000269
6x400	6 pcs.	W-HS-0000270
4x600	4 pcs.	W-HS-0000271

Upper frame covers SRW

DEPTH	WIDTH	INDEX
875	1810	W-HS-0000272
875	2630	W-HS-0000273





CUSTOMIZATION

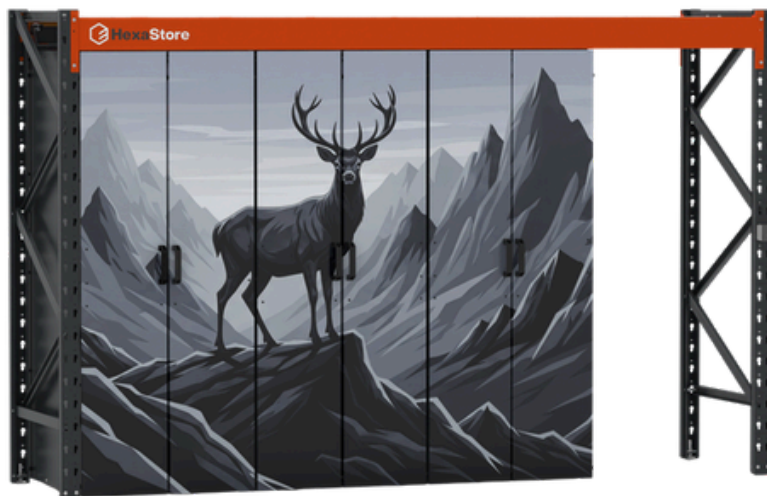
Accessories make organization much easier, improve safety, and allow you to tailor the interior precisely to the specific needs of your work.





Functional and visual consistency

A custom-designed solution that seamlessly combines ergonomic work practices with aesthetics tailored to the specific environment.



Full customization of SRS and SRW systems

The ability to customize colors, finishes, and details to suit the character of the space and the user's needs.



Custom design of cabinet fronts and graphics

The system can be enhanced with visual identity elements, signage, and branding consistent with the company's image.



INDUSTRIAL FURNITURE SYSTEM

Durable and functional furniture for workshops, industrial halls, warehouses, and other spaces where modularity and ergonomics are key.



Industrial Furniture System

Furniture that works with you!

The SMP Industrial Furniture System is a versatile and robust solution designed to organize functional workstations—where reliability, order, and ergonomics matter most. The system includes modular workbenches, cabinets, drawers, add-on units, and storage containers that can be freely configured and expanded depending on the nature of the work. SMP allows you to create a workspace tailored to your needs, tasks, and space.



Powder-coated finish



Welded construction of the housings



Stability and durability



Modularity of the system



Customization options



Ability to reconfigure

Furniture set SMP 1

W-HS-0000231



LP.	NAME OF SMP 1 SET	ITEM	INDEX
1	Wall cabinet 607x475x350	2	W-HS-0000215
2	Base cabinet, 4x 1M drawers, 2x 2M drawers 607x900x500	1	W-HS-0000209
3	Base cabinet, 1x shelf 607x900x500	1	W-HS-0000206
4	Filler panel 64x607	2	P-HS-0000144
5	Perforated panel 265x607, 10x10 perforation, 38x38 grid	4	P-HS-0000141
6	Side plinth	2	P-HS-0000108
7	24mm plywood top 1215x510	1	K-KZ-0003294
8	Center wall beam for panels	1	P-HS-0000137
9	End wall beam for panels	2	P-HS-0000138

Furniture set SMP 2

W-HS-0000232



LP.	NAME OF SMP 2 SET	ITEM	INDEX
1	Low cabinet, 2x 1M drawers, divided shelf 607x900x500	1	W-HS-0000220
2	Tall cabinet, 3x shelves 607x2000x500	1	W-HS-0000212
3	Wall cabinet 607x475x350	2	W-HS-0000215
4	Low cabinet, drawers 4x 1M, 2x 2M 607x900x500	1	W-HS-0000209
5	Filler panel 64x607	2	P-HS-0000144
6	Perforated panel 265x607, 10x10 perforation, 38x38 grid	4	P-HS-0000141
7	Side plinth	2	P-HS-0000108
8	24mm plywood top 1215x510	1	K-KZ-0003294
9	Center wall beam for panels	2	P-HS-0000137
10	End wall beam for panels	2	P-HS-0000138



Furniture set SMP 3

W-HS-0000233



LP.	NAME OF SMP 3 SET	ITEM	INDEX
1	Low cabinet, waste bin, casters 405x900x500	1	W-HS-0000217
2	Tall cabinet, 3 shelves 607x2000x500	1	W-HS-0000212
3	Wall-mounted cabinet 607x475x350	2	W-HS-0000215
4	Wall-mounted cabinet 405x475x350	1	W-HS-0000214
5	Low cabinet, drawers 4x 1M, 2x 2M 607x900x500	1	W-HS-0000209
6	Low cabinet, 1x shelf 607x900x500	1	W-HS-0000206
7	Filler panel 64x607	2	P-HS-0000144
8	Filler panel 64x405	1	P-HS-0000143
9	Perforated panel 265x607, 10x10 perforation, 38x38 grid	3	P-HS-0000141
10	Perforated panel 265x405, 10x10 perforation, 38x38 grid	2	P-HS-0000140
11	Panel with 1x switch, 2x outlet 265x607, perforation	1	P-HS-0000176



LP.	NAME OF SMP 3 SET	ITEM	INDEX
12	Side plinth	2	P-HS-0000108
13	LED-lit light box 607	2	P-HS-0000150
14	LED-lit light box 405	1	P-HS-0000149
15	Side light box	2	P-HS-0000178
16	24mm plywood top 1620x510	1	K-KZ-0003296
17	Center panel support beam	3	P-HS-0000137
18	End panel support beam	2	P-HS-0000138

Furniture set SMP 4

W-HS-0000234



LP.	NAME OF SMP 4 SET	ITEM	INDEX
1	Low cabinet, bin, casters 405x900x500	1	W-HS-0000217
2	Tall cabinet, 3 shelves 810x2000x500	2	W-HS-0000213
3	Low cabinet, drawers 4x 1M, 2x 2M 810x900x500	2	W-HS-0000210
4	Side plinth	2	P-HS-0000108
5	24mm plywood countertop 2025x510	1	K-KZ-0003298

Furniture set SMP 5

W-HS-0000235



LP.	NAME OF SMP 5 SET	ITEM	INDEX
1	Rolling cabinet, 3x 1M drawers, 2x 2M drawers 550x810x500	1	W-HS-0000224
2	Tall cabinet, 3x shelves 810x2000x500	1	W-HS-0000213
3	Wall-mounted cabinet 810x475x350	1	W-HS-0000216
4	Wall cabinet 607x475x350	2	W-HS-0000215
5	Low cabinet, drawers 4x 1M, 2x 2M 607x900x500	1	W-HS-0000209
6	Low cabinet, roll holder 405x900x500	1	W-HS-0000218
7	Low cabinet, basket, roller 405x900x500	1	W-HS-0000217
8	Filler panel 64x810	1	P-HS-0000145
9	Filler panel 64x607	2	P-HS-0000144
10	Perforated panel 265x810, 10x10 perforation, 38x38 grid	2	P-HS-0000142
11	Perforated panel 265x607, 10x10 perforation, 38x38 grid	3	P-HS-0000141
12	Panel with 1 switch, 2 outlets 265x607, perforated	1	P-HS-0000176
13	Side base	2	P-HS-0000108



LP.	NAME OF SMP 5 SET	ITEM	INDEX
14	Light box with LED lighting 810	1	P-HS-0000151
15	Light box with LED lighting 607	2	P-HS-0000150
16	Side light box	1	P-HS-0000178
17	24mm plywood top 2025x510	1	K-KZ-0003298
18	Center panel support beam	3	P-HS-0000137
19	End panel support beam	2	P-HS-0000138

Furniture set SMP 6

W-HS-0000236



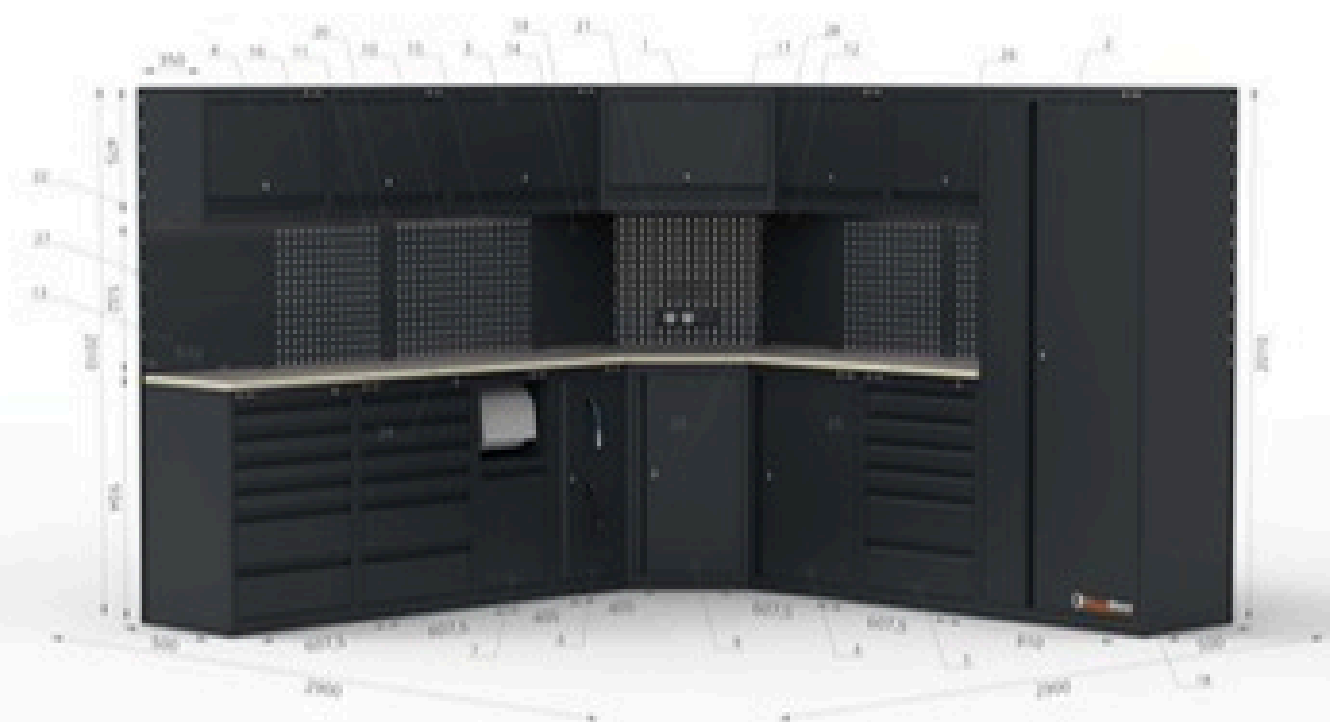
LP.	NAME OF SMP 6 SET	ITEM	INDEX
1	Low corner cabinet	1	W-HS-0000222
2	Low cabinet, 4x 1M drawers, 2x 2M drawers, 607x900x500	2	W-HS-0000209
3	Low cabinet, 1x shelf 607x900x500	2	W-HS-0000206
4	Filler panel 265x607	8	P-HS-0000166
5	Filler panel 265x405	8	P-HS-0000165



LP.	NAME OF SMP 6 SET	ITEM	INDEX
6	Perforated panel 265x607, 10x10 perforation, 38x38 grid	11	P-HS-0000141
7	Panel with 3 sockets 265x607, 10x10 perforation, 38x38 grid	1	P-HS-0000147
8	Side plinth	2	P-HS-0000108
9	24mm plywood corner top	1	K-KZ-0003299
10	24mm plywood top 1215x510	2	K-KZ-0003294
11	Center wall beam for panels	4	P-HS-0000137
12	End wall beam for panels	2	P-HS-0000138
13	Corner wall beam for panels	2	P-HS-0000139

Furniture set SMP 7

W-HS-0000237



LP.	NAME OF SMP 7 SET	ITEM	INDEX
1	Wall-mounted corner cabinet	1	W-HS-0000223
2	Tall cabinet, 3 shelves, 810x2000x500	1	W-HS-0000213



LP.	NAME OF SMP 7 SET	ITEM	INDEX
3	Wall cabinet 810x475x350	1	W-HS-0000216
4	Wall cabinet 607x475x350	4	W-HS-0000215
5	Base cabinet, drawers: 4x 1M, 2x 2M 607x900x500	3	W-HS-0000209
6	Base cabinet, roll-out unit 405x900x500	1	W-HS-0000218
7	Low cabinet, basket, roller 405x900x500	1	W-HS-0000217
8	Low cabinet, 1x shelf 607x900x500	1	W-HS-0000206
9	Low corner cabinet	1	W-HS-0000222
10	Filler panel 64x810	1	P-HS-0000145
11	Filler panel 64x607	5	P-HS-0000144
12	Filler panel 64x405	2	P-HS-0000143
13	Filler panel 265x607	2	P-HS-0000166
14	Filler panel 265x405	4	P-HS-0000165
15	Perforated panel 265x810, 10x10 perforation, 38x38 grid	2	P-HS-0000142
16	Perforated panel 265x607, 10x10 perforation, 38x38 grid	7	P-HS-0000141
17	Panel with 1 switch and 2 outlets, 265x607, perforated	1	P-HS-0000176
18	Side base	2	P-HS-0000108
19	Panel with LED lighting 810	1	P-HS-0000151
20	Panel with LED lighting 607	4	P-HS-0000150
21	Corner lighting panel	1	P-HS-0000179
22	Side lighting panel	4	P-HS-0000178
23	24mm plywood corner top	1	K-KZ-0003299
24	24mm plywood top 2025x510	1	K-KZ-0003298
25	24mm plywood top 1215x510	1	K-KZ-0003294
26	Center panel support beam	6	P-HS-0000137
27	End panel support beam	2	P-HS-0000138
28	Corner panel support beam	2	P-HS-0000139



SMP COMPONENTS

The system's modular components allow for safe storage—whether in a professional workshop or a home garage.



Mobile cabinet, drawers 3x1M, 2x2M 550x810x500

W-HS-0000224



NAME	QUANTITY	INDEX
Rolling cabinet 550x900x500	1	P-HS-0000171
Drawer 1M	3	P-HS-0000172
Drawer 2M	2	P-HS-0000173
Drawer lock	1	P-HS-0000174

Low cabinet, 1x shelf 405x900x500

W-HS-0000205

NAME	QUANTITY	INDEX
Low cabinet 405x900x500	1	P-HS-0000091
Bottom 405	1	P-HS-0000101
Door 405x810	1	P-HS-0000109
Door magnet	2	P-HS-0000122
Shelf 405	1	P-HS-0000124



Low cabinet, 1x shelf 607x900x500

W-HS-0000206



NAME	QUANTITY	INDEX
Low cabinet 607x900x500	1	P-HS-0000092
Bottom 607	1	P-HS-0000102
Door 607x810	1	P-HS-0000110
Door magnet	2	P-HS-0000122
Shelf 607	1	P-HS-0000125



Low cabinet, 1x shelf 810x900x500

W-HS-0000207



NAME	QUANTITY	INDEX
Low cabinet 810x900x500	1	P-HS-0000093
Bottom 810	1	P-HS-0000103
Door 607x810	1	P-HS-0000110
Door L 200x810	1	P-HS-0000113
Top magnet	1	P-HS-0000123
Shelf 810	1	P-HS-0000126

Low cabinet, basket, roll 405x900x500

W-HS-0000217

NAME	QUANTITY	INDEX
Low cabinet 405x900x500	1	P-HS-0000091
Divider shelf	1	P-HS-0000127
Drawer with a basket	1	P-HS-0000156
Securing the paper roll	1	P-HS-0000157



Low cabinet, corner

W-HS-0000222



NAME	QUANTITY	INDEX
Low cabinet corner	1	P-HS-0000100
Corner doors	1	P-HS-0000121
Corner Bottom	1	P-HS-0000155

Low cabinet, rozwijak 405x900x500

W-HS-0000218



NAME	QUANTITY	INDEX
Low cabinet 405x900x500	1	P-HS-0000091
Zwijaki kablowe	1	P-HS-0000158

Low cabinet, Drawers 2x1M, shelf podział 405x900x500

W-HS-0000219

NAME	QUANTITY	INDEX
Low cabinet 405x900x500	1	P-HS-0000091
Bottom 405	1	P-HS-0000101
Door 405x575 - montaż	1	P-HS-0000115
Magnes do Door	2	P-HS-0000122
shelf podziałowa	1	P-HS-0000127
Drawer 1M	2	P-HS-0000130



Low cabinet, Drawers 2x1M, shelf podział 607x900x500

W-HS-0000220



NAME	QUANTITY	INDEX
Low cabinet 607x900x500	1	P-HS-0000092
Bottom 607	1	P-HS-0000102
Door 607x575	1	P-HS-0000115
Magnes do Door	2	P-HS-0000122
shelf podziałowa	1	P-HS-0000128
Drawer 1M	2	P-HS-0000131



Low cabinet, Drawers 2x1M, shelf podział 810x900x500

W-HS-0000221



NAME	QUANTITY	INDEX
Low cabinet 810x900x500	1	P-HS-0000093
Bottom 810	1	P-HS-0000103
Door 607x575	1	P-HS-0000115
Door L 200x575	1	P-HS-0000117
Divider shelf	1	P-HS-0000129
Drawer 1M	2	P-HS-0000132

Low cabinet, Drawers 4x1M, 2x2M 405x900x500

W-HS-0000208

NAME	QUANTITY	INDEX
Low cabinet 405x900x500	1	P-HS-0000091
Drawer 1M	4	P-HS-0000130
Drawer 2M	2	P-HS-0000133
Drawer lock	1	P-HS-0000136



Low cabinet, Drawers 4x1M, 2x2M 607x900x500

W-HS-0000209



NAME	QUANTITY	INDEX
Low cabinet 607x900x500	1	P-HS-0000092
Drawer 1M	4	P-HS-0000131
Drawer 2M	2	P-HS-0000134
Drawer lock	1	P-HS-0000136

Low cabinet, drawers 4x1M, 2x2M 810x900x500

W-HS-0000210



NAME	QUANTITY	INDEX
Low cabinet 810x900x500	1	P-HS-0000093
Drawer 1M	4	P-HS-0000132
Drawer 2M	2	P-HS-0000135
Drawer lock	1	P-HS-0000136

Wall cabinet 405x475x350

W-HS-0000214

NAME	QUANTITY	INDEX
Wall-mounted cabinet 405x475x350	1	P-HS-0000097
Hanging bottom 405	1	P-HS-0000104
Door U 405x405	1	P-HS-0000118



Wall cabinet 607x475x350

W-HS-0000215



NAME	QUANTITY	INDEX
Wall-mounted cabinet 607x475x350	1	P-HS-0000098
Drawer lock 607	1	P-HS-0000105
Door 607x405	1	P-HS-0000119

Wall cabinet 810x475x350

W-HS-0000216



NAME	QUANTITY	INDEX
Wall-mounted cabinet 810x475x350	1	P-HS-0000099
Drawer lock 810	1	P-HS-0000106
Door U 810x405	1	P-HS-0000120

Wall-mounted corner cabinet

W-HS-0000223

NAME	QUANTITY	INDEX
Corner wall cabinet	1	P-HS-0000168
Corner hanging bottom	1	P-HS-0000169
Door U corner	1	P-HS-0000170



Tall cabinet, 3x shelf 405x2000x500

W-HS-0000211



NAME	QUANTITY	INDEX
High body 405x2000x500	1	P-HS-0000094
Bottom 405	1	P-HS-0000101
Door 405x1900	1	P-HS-0000111
Door magnet	2	P-HS-0000122
Shelf 405	3	P-HS-0000124

Tall cabinet, 3x shelf 607x2000x500

W-HS-0000212



NAME	QUANTITY	INDEX
High body 607x2000x500	1	P-HS-0000095
Bottom 607	1	P-HS-0000102
Door 607x1900	1	P-HS-0000112
Door magnet	2	P-HS-0000122
Shelf 607	3	P-HS-0000125

Tall cabinet, 3 shelves, 810x2000x500

W-HS-0000213

NAME	QUANTITY	INDEX
High body 810x2000x500	1	P-HS-0000096
Bottom 810	1	P-HS-0000103
Door 607x1900	1	P-HS-0000112
Door L 200x1900	1	P-HS-0000114
Top magnet	1	P-HS-0000123
Shelf 810	3	P-HS-0000126



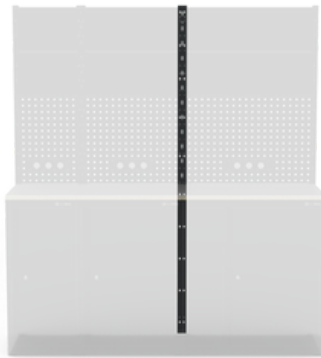


SMP ACCESSORIES

Accessories make organization much easier, improve safety, and allow you to tailor the interior precisely to the specific needs of your work.



Center panel support beam



INDEX

P-HS-0000137

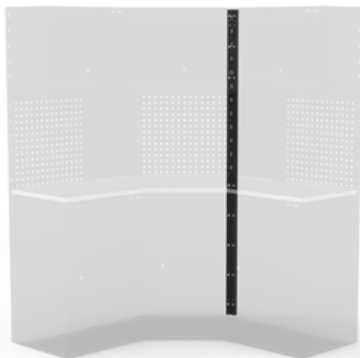
Edge panel beam



INDEX

P-HS-0000138

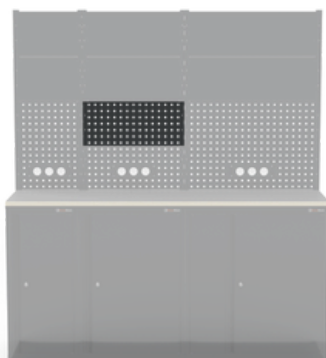
Corner wall stud



INDEX

P-HS-0000139

Perforated plate 265



DIMENSIONS

INDEX

Perforated plate 265x405

P-HS-0000140

Perforated plate 265x607

P-HS-0000141

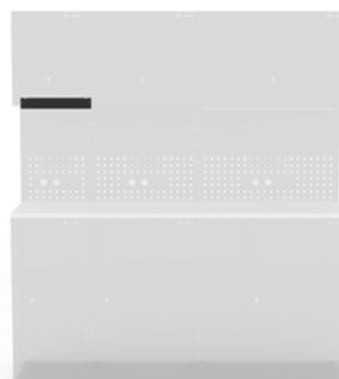
Perforated plate 265x810

P-HS-0000142

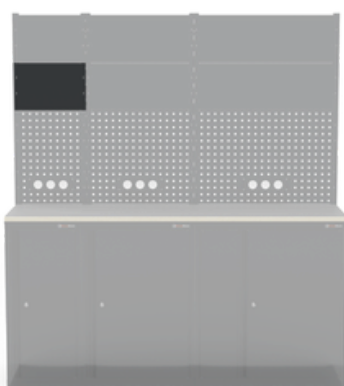


Filler plate 64

DEPTH	INDEX
Filler panel 64x405	P-HS-0000143
Filler panel 64x405	P-HS-0000144
Filler panel 64x405	P-HS-0000145



Filler panel 265



DEPTH	INDEX
Filler panel 265x405	P-HS-0000165
Filler panel 265x607	P-HS-0000166
Filler panel 265x810	P-HS-0000167

Plate 3x outlet 265

DIMENSIONS	INDEX
Plate 3x outlet 265x405	P-HS-0000146
Plate 3x outlet 265x607	P-HS-0000147
Plate 3x outlet 265x810	P-HS-0000148

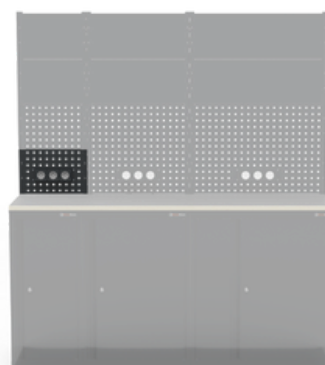
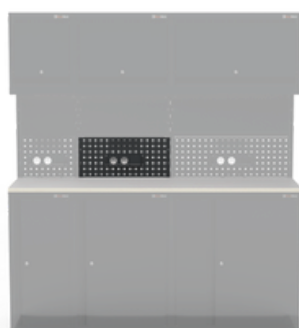


Plate 1x switch, 2x outlet 265



DIMENSIONS	INDEX
Plate 1x switch, 2x outlet 265x405	P-HS-0000175
Plate 1x switch, 2x outlet 265x607	P-HS-0000176
Plate 1x switch, 2x outlet 265x810	P-HS-0000177

Indoor clothes hanger



DIMENSIONS

INDEX

Clothes hanger 405

P-HS-0000152

Clothes hanger 607

P-HS-0000153

Clothes hanger 810

P-HS-0000154

Interior shelf

DEPTH

INDEX

Shelf 405x500

P-HS-0000124

Shelf 607x500

P-HS-0000125

Shelf 810x500

P-HS-0000126



Light box with LED lighting



DIMENSIONS

INDEX

Light box with LED lighting 405

P-HS-0000149

Light box with LED lighting 607

P-HS-0000150

Light box with LED lighting 810

P-HS-0000151

Side light cover

P-HS-0000178

Corner light fixture

P-HS-0000179



**SRS
Sliding
Shelving
System**



**SRW
System of
Pull-Out
Shelves**



**SMP - Industrial
Furniture System**



Sobienki 30, 08-445 Osieck

kontakt@hexastore.pl

tel. + 48 797 617 567

www.HexaStore.pl